

SW-3302 Mini Self Exam Colposcope

See Yourself to Insure the Health

Simple and clear: reveal your health status by a glance.

Relaxed and respected: handle the privacy by your own.

Convenient and economy: use it at home and save money.

Ready for self-checking: find problems and tracking effect.

A guard of Womens' Health---- Handy Equipment for Ladies



Product features

- *Performing cervical self-examination at home/clinic.
- *Discover earlier, healthy more.
- *Monitor treatment and prevent recurrence,
- *The privacy is under your control.
- *Portability as a camera.

Specifications

Main unit

Power Supply	DC 4.5V, AAA batteries (*3)	
Output Signal	PAL color system, AV(video)signal	
Normal Working Conditions	temperature:15°C-"30°C	
	humidity:≤93%RH	
	pressure:700hPa—1060hPa	
Conditions of Storage and Transport	temperature:-20°C~+45 °C	
	humidity:90%RH	
	pressure:700hPa—1060hPa	
Weight	about 50g (batteries non-included)	
Dimensions (L*W*H)	126×40×34	
Safety Class	internal battery source, BF type	
Technical Index	effective range of observation	70mm~100mm
	angle of observation	20°, permit error -10%,no upper limit
	resolution	2.5 lp/mm, permit error -10%,no upper limit
	Memory	≥16M

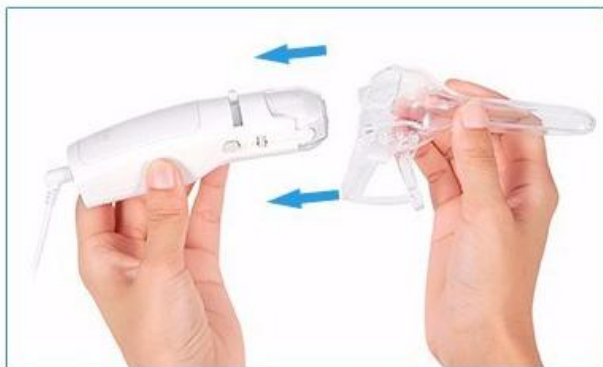
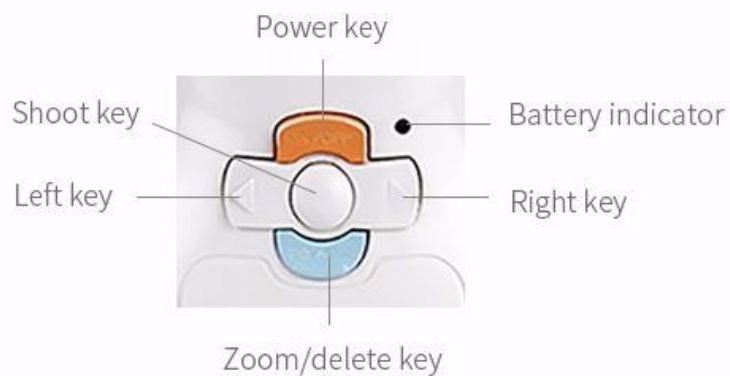
Disposable Speculum

Size parameters		S	M	Notes
Outline Dimension	Length (movable bill)	98±2	109±2	Size S is for female before childbirth or age above 50s Size M is for female after childbirth and age below 50s.
	Width (of the bill)	20±1	27±1	
Height of Front Outside Mouth	Minimum	31±5	40±5	
	Maximum	60±5	67±5	

Common Vaginitis

	Trichomonas vaginitis	Monilial vaginitis	Senile vaginitis
Leucorrhea Symptoms	Thinner in gray-yellow frothy and purulent look with odor.	Thicker in white or as loose cheese.	Thinner in light yellow watery or blood-mix purulent look.
Vulvae Pruritus	Yes.	Accompanied by burning pain while the symptom becomes	Feel burning and hot.
Vaginal mucosa	Showing congestion and reddening and dispersed spots on the vagina mucosa.	The vaginal mucosa is covered by white membrane-like substance.serious.	Showing congestion and bleeding spots on the vaginal mucosa.

function keys:



Disposable vaginal speculum

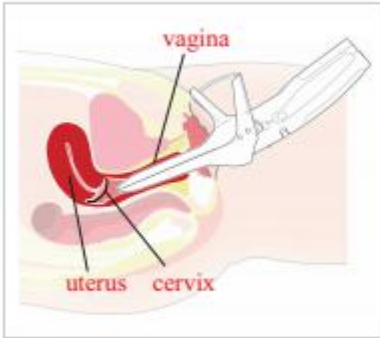
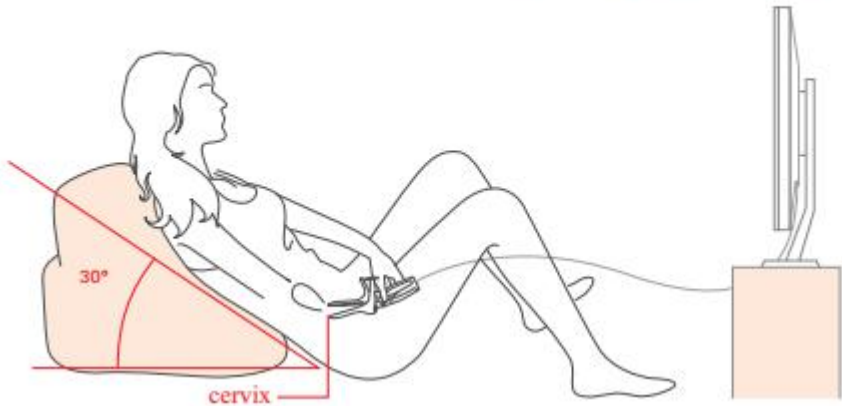
Small: for nulliparous females
Middle: for Natural birth females

vaginal speculum could be purchased separately

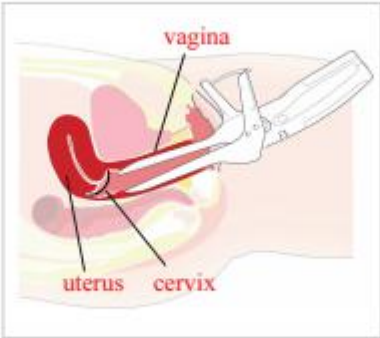


Self-exam method

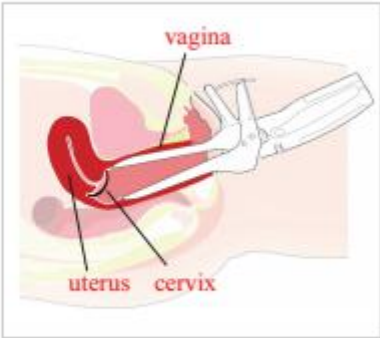
Do not touch the disposable vaginal speculum with your hands directly.



Picture 1
Insert the product into your vagina



Picture 2
Search for the cervix's location



Picture 3
Examination after location

Healthy cervix uteri

Real photographed



Healthy cervix uteri

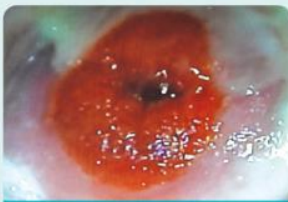


Cervix uteri after spontaneous delivery

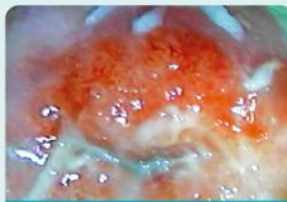


Cervix uteri without any delivery or after Cesarean section

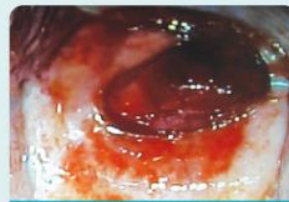
Unhealthy cervix uteri



Grade II cervical erosion



Grade III cervical erosion



Cervical polyp

Package

- * Body
- * AV video cable
- * USB data cable
- * User's guide(with the warranty card)
- * One size S and one size M of the disposable vaginal speculum